

CAPITAL

Mesh Stacking Chair



Ergonomic

BIFMA Certified
250 LB Capacity

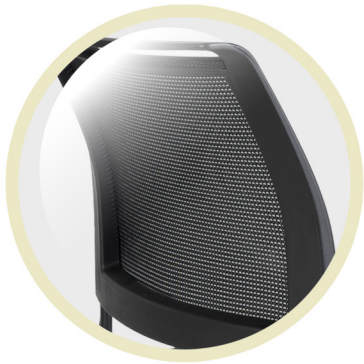


Available
in



Uplift your office or meeting space with the RGS Capital Mesh Stacking Office Chairs. This set of chairs combines practicality with comfort, featuring a compact design (17"W x 20"D x 34"H) that's perfect for lobby, office and breakroom settings. Each chair boasts a spacious 17" x 17.5" fabric seat, an 18" x 14.5" mesh back, and a convenient 18" seat height from the floor. Designed for both individual use and group seating arrangements, these chairs offer a smart solution for dynamic workspaces, backed by a robust warranty to ensure long-lasting performance.

CAPITAL



Ergonomic Comfort and Breathability

Experience all-day comfort with the slightly tilted mesh back that provides excellent lumbar support and promotes airflow. The thickened, soft seat cushion with breathable fabric ensures a dry and relaxed sitting experience, even during extended periods of use.



Versatile and Space-Efficient Design

Easily reconfigure your space with these lightweight, stackable chairs. The ability to stack up to 6 chairs high. Built with a sturdy tubular steel sled base, each chair supports up to 250 lbs. The sled design eliminates the need for casters, preventing damage to wooden floors.



Built-In Linking Brackets

Effortlessly create organized and stable rows of seating with pre-installed linking brackets, perfect for conference rooms, training spaces, or any venue requiring ganged chairs.

Chair Details



RGS
FURNITURE
"Furniture That Adapts"

2375 Romig Rd.
Akron OH 44320
330-848-3700